

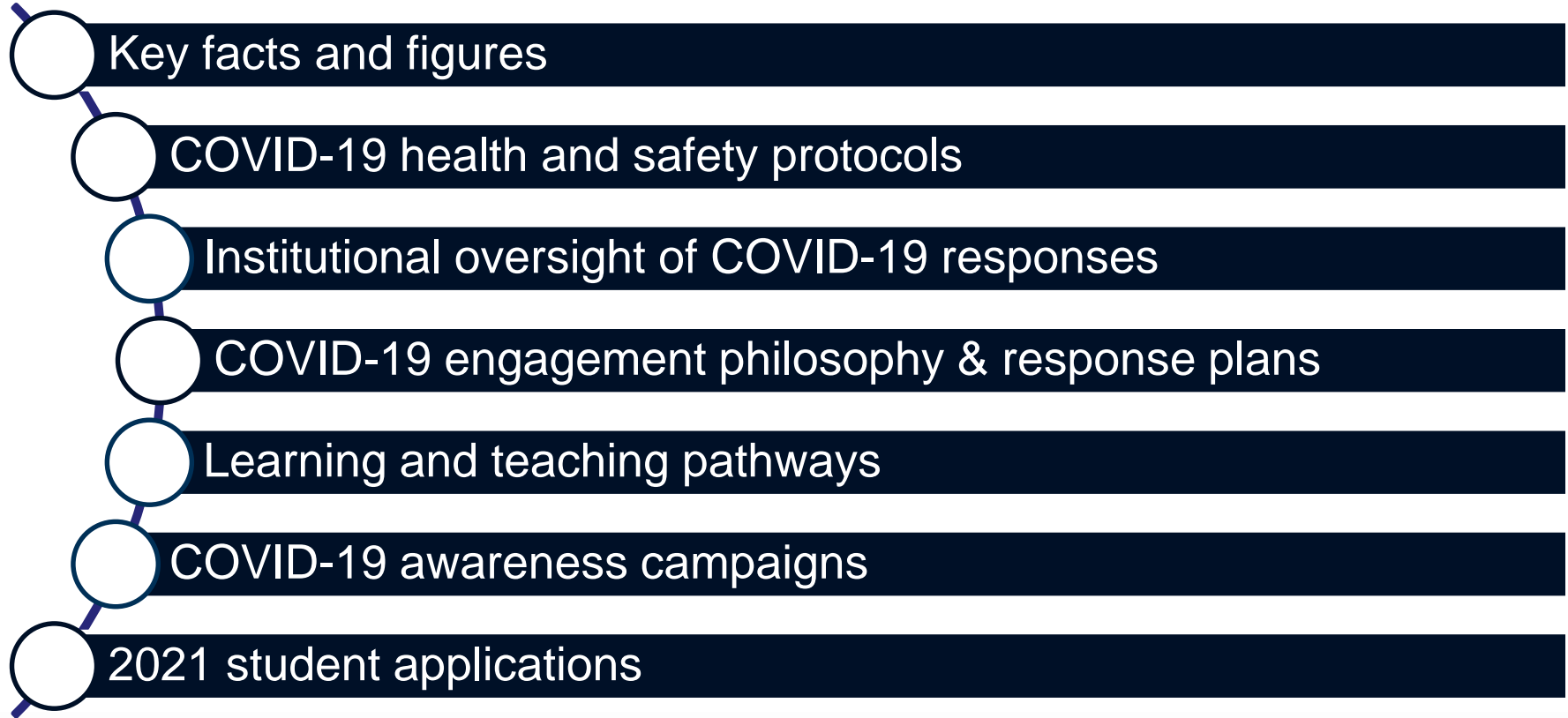
NELSON MANDELA
UNIVERSITY



Deputy Minister's Visit to Nelson Mandela University

4 August 2020

Overview of presentation

- 
- Key facts and figures
 - COVID-19 health and safety protocols
 - Institutional oversight of COVID-19 responses
 - COVID-19 engagement philosophy & response plans
 - Learning and teaching pathways
 - COVID-19 awareness campaigns
 - 2021 student applications

Key facts and figures (as at 28/07/2020)

Number of headcount undergraduate students registered in 2020	26 324
Number of headcount undergraduate students that deregistered in 2020 (cumulative)	266
Number of remaining undergraduate headcount registered students	26 058
Number of headcount postgraduate students registered in 2020	3 847
Number of headcount postgraduate students that deregistered in 2020 (cumulative)	94
Number of remaining postgraduate headcount registered students	3 753
Number of permanent staff in 2020	2 471
Number of permanent instruction/research (academic) staff in 2020	662
% of all students returned to campus (cumulative)	29.5%
% of all staff returned to campus (cumulative)	7.2%
% of instruction/research (academic) and professional staff returned to campus (cumulative)	5.1%
Number of students living in university residence facilities (cumulative)	1 274
Number of students living in off-campus accommodation (cumulative)	1 945

COVID-19 statistics: students

Campus	Gate screened	Clinic screened	Res screened	App screened	Total Screenings	Confirmed Cases	Cleared Cases	Active Cases	Deaths	Confirmed Contacts	Cleared Contacts	Active Contacts	PUI's
All	5183	1779	4538	12522	24022	10	7	3	0	34	27	7	1
South		344	1038	COVID-19 STATISTICS ON CAMPUS (STUDENTS) 3/08/2020									
North	2530	1009	2822										
Ocean Sciences	1650		246										
2nd Avenue	281		432										
Missionvale	80												
George	642	426											

COVID-19 statistics: staff

Campus	Total Screenings	Confirmed Cases	Cleared Cases	Active Cases	Deaths	Confirmed Contacts	Cleared Contacts	Active Contacts
All	2468	72	58	11	3	102	102	0
North/South/Ocean	1280	COVID-19 STATISTICS ON CAMPUS (STAFF) 3/08/2020						
Missionvale	70							
Second Avenue	100							
George	991							
Bird Street	27							

COVID-19 health and safety protocols

Disease prevention

- Compulsory sanitary measures, such as physical distancing, temperature-taking, hand washing, hand sanitising and wearing of masks.

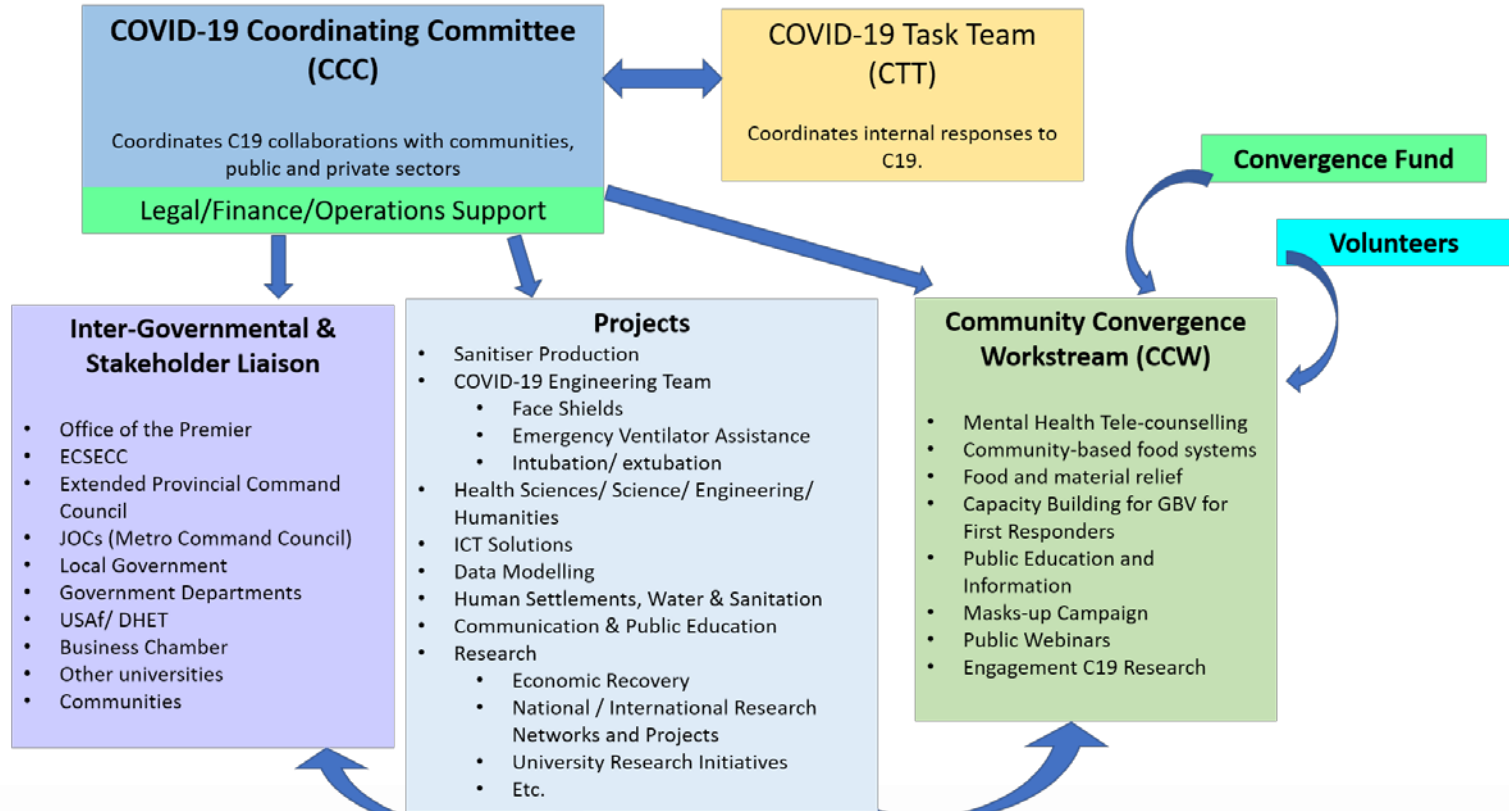
Disease surveillance

- Diagnostic screening and testing.

Disease management

- Quarantine/isolation protocols, virus diagnosis and treatment, decontamination and protocols for returning to campus following a COVID-19 positive diagnosis.

Institutional oversight of COVID-19 pandemic response



Coronavirus Coordinating Committee (CCC)

CCC is a sub-committee of MANCO chaired by the Acting Deputy Vice Chancellor: Engagement and Transformation.

Mandate:

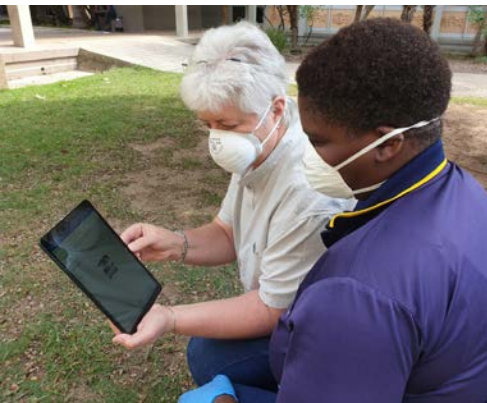
- Steers the University's engagement, interventions and partnerships with external entities, structures and networks to support COVID-19 pandemic responses at a local, provincial and national level.
- Enables swift and effective responsive capability to the COVID-19 pandemic, aligned to and informed by the University's values and its commitment to be in the service of society.



COVID-19 engagement philosophy and Convergence Fund

Mandela University strives to serve the public good and promote social justice by implementing interdisciplinary engagement projects, such as:

- Sanitiser production
 - 3D-printing and distribution of face shields
 - #MaskUpMandela Campaign
 - Medical facilities and support (e.g. Zanempilo mobile clinic)
 - ICT solutions and APPs
- Establishing the Mandela University Convergence Fund and the Community Convergence Workstream to respond to the social struggles of vulnerable communities.



Coronavirus Task Team (CTT)

CTT is a sub-committee of MANCO chaired by the Deputy Vice Chancellor: People and Operations.

Mandate:

Development and implementation of COVID-19 preventative and mitigation measures and interventions, including:

- Ensuring an enhanced hygiene and cleaning regime;
- Maintaining physical distancing;
- Reducing the number of people on campus;
- Enabling remote learning, teaching and working;
- Acquiring Personal Protective Equipment (PPE).

COVID-19 response plans

- A Standard Operating Procedure (SOP) guides the return to campuses.
- A single entrance and exit point into campuses and buildings to enable controlled screening.
- On- and off-campus student residences were prepared for the return of students to PE and George.
- General computer labs and other spaces have been adjusted to ensure physical distancing is maintained.
- A number of processes have been automated to ensure that:
 - Staff can access University resources from home.
 - Mobile Apps can be used for health processes such as screening.
 - Students returning to campus can be issued with permits and book transport, meals and venues.

COVID-19 infrastructure readiness

- **Visible floor markers** - guide physical distancing where queuing occurs.
- **Isolating seats** – every second seat clearly marked with tape to ensure physical distancing in venues.
- **Perspex screens** - Installed where face to face interactions are unavoidable.
- **Screening centres** – COVID screening centres on all campuses close to the entrances.
- **Sanitiser dispensers** - Installed at all lecture venues.
- **Ventilation** – Only natural ventilation through windows is used unless this is not possible.
- **Lifts** – UV sanitiser system sanitises constantly and floor markers to guide physical distancing.
- **Campus COVID protocols** – Apply to all contractors and transport providers.



Phased return of staff to campus

- All front-line staff returning to campus have been issued with the requisite PPEs.
- Staff able to work remotely and those with comorbidities have been encouraged to work from home – guidelines have been developed by HR for working remotely.
- Phased return of staff aligned with the percentage allowed on campus at each lockdown level.
- A list of staff working on campus has been developed to enable effective screening.
- Counselling and wellness interventions to support staff (Wellness@Work).
- On entry at gates, temperature readings and sanitising takes place.



Learning and teaching continuity plans

- Scenario planning - many unknowns and need to be flexible and agile.
- Core values - social justice and equality, *ubuntu*, excellence and integrity.
- Our unwavering commitment to provide all our students with learning and teaching opportunities to complete the 2020 academic year.
- Need to cater for differing contexts and needs of our students, especially those who experience challenges with learning remotely.
- University has distributed over **4 750** laptops to students. This has resulted in over **70%** participation rate in online learning.
- The University has been giving students **30GB** of data monthly to access to online learning material. This is in addition to zero-rated sites.
- The MobileApp for Moodle assists students using mobile devices with full functionality.

Learning and teaching pathways

We align pathways as pandemic & lockdown levels unfold



Webpage - <https://www.mandela.ac.za/learningpathways>

Phased approach to multi-modal learning pathways

Pathway 1

- From 21 April, preparation for learning in alternative ways.
- From 4 May, learning intensified for Pathway 1 (PW1).
- PW1 consists of, on average, 70% of our students.
- These students completed their semester 1 module assessments in June-July.

Pathway 2

- From mid-July, we phased in the provision of intensive blended LT for PW2 returning students and those who now have laptops and connectivity, while dispatching materials to other Pathway 2 students.
- To date, **7 805** PW2 students were notified to return and **5 763** have accepted the conditions.
- Permits issued: **7587**; Conditions accepted: **5439** (up to 31 July 2020)
- We aim to return more of the PW2 students without devices or connectivity as soon as possible.

Student wellness and support

- A range of learning and psychosocial support for students, wherever they are, through online, telephonic, WhatsApp, SMS, e-mail and social media platforms.
- Online self-help materials and electronic/tele-counselling are available for students feeling lonely and anxious.
- Student counselling services provided (up to 28 July 2020):
 - **361** students received psycho-social support.
 - **927** individual counselling sessions were conducted.
- A webpage (<https://www.mandela.ac.za/learningpathways>) has been created with a range of resources and FAQs.
- Postgraduate and international students are supported by the Research, Innovation and Internationalisation portfolio and resources are available on the website and via e-mail.

COVID-19 awareness campaigns

- As staff and students return to campus, a campaign centred on a combination of hygiene measures, screening, distancing, and masks has been activated.
- Training videos on University coronavirus webpage.
- Digital posters and flyers have been developed.
- Printed posters are displayed in all venues and buildings.
- A comprehensive handbook for staff and students is available.

IT IS IN YOUR HANDS
the fight against COVID-19

CORONAVIRUS (COVID-19)

#MaskUpMandela Campaign

HOW TO MAKE AN EASY CLOTH FACE MASK:

WHAT MATERIALS CAN BE USED?

HOUSEHOLD MATERIALS:	% PARTICLES CAPTURED
• Vacuum Cleaner Bag	86%
• Dish Towel	73%
• Cotton Blend	70%
• Antimicrobial Pillowcase	68%
• Linen	62%
• Pillowcase	57%
• Silk	54%
• 100% cotton T-shirt	51%
• Scarf	49%

Effectiveness Against 0.02-Micron Particles
Open data tests: Smart Air - smartairfilters.com / groundup.org.za



HOW TO MAKE A CLOTH MASK:

STEP 1	STEP 2	STEP 3	STEP 4	STEP 5	STEP 6
<p>20 x 20 cm</p>	<p>1 - 2cm</p>	<p>3cm</p>	<p>1-2 cm</p>	<p>1-2 cm</p>	<p>1-2 cm</p>
Choose your fabric, sterilize it properly for your safety, cut to 20x20 cm.	Fold the upper and lower sides of fabric to 1-2 cm, sew or iron to make permanent	Make even larger folds of 3 cm from top to bottom	Iron the folds to stay in place. Sew or staple the fabric vertically on the left and right sides.	Staple or sew the elastic to the corners of the mask	Wash your mask and let it dry. Please iron the mask as this will assist in getting rid of possible germs

CORONAVIRUS OUTBREAK NATIONAL HOTLINE:

0 800 029 999

08H00 - 16H00 (MONDAY - FRIDAY)

For more information on COVID-19 go to:

<https://www.mandela.ac.za/coronavirus>

CORONAVIRUS (COVID-19)

THE NATIONAL DEPARTMENT OF HEALTH STATES THAT:

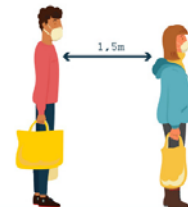
Everyone must wear
CLOTH face masks
when in public.



Members of the public must
not use N-95 and surgical masks;
medical masks remain reserved
only for healthcare workers.



Hand washing and
social distancing still remain
the best ways to fight
COVID-19.



CORONAVIRUS OUTBREAK NATIONAL HOTLINE:

0 800 029 999

08H00 - 16H00 (MONDAY - FRIDAY)

For more information on COVID-19 go to:

<https://www.mandela.ac.za/coronavirus>

All information sourced from The National Department of Health

My Mandela Student Brigade

- My Mandela Student Brigade – public education campaign led by the SRC using social media and other platforms.
- Aimed at:
 - Shifting behaviour in favour of healthy lifestyles;
 - Caring for the health of fellow students;
 - Cultivating compassionate human beings;
 - Adhering to Covid-19 measures; and
 - Displaying social cohesion and solidarity.
- Residence visits to assess compliance and encourage behavioural change.
- Active participation in crafting and shaping University messaging for students.



Student applications for 2021

- Applications opened online on 6 April 2020.
- The 2021 academic year starts on 9 March 2021 and ends in December 2021.
- 2021 student applications as at 28 July 2020 compared to same date last year:

	2020		2021	
FIRST TIME ENTERING	ACCEPTED	APPLICATIONS	ACCEPTED	APPLICATIONS
UG	7 027	55 563	10 907	49 587
PG	764	5 547	129	5 275
Total	7 791	61 110	11 036	54 862



Video link:

<https://youtu.be/2uY4dLlw6Pg>

Change the World

mandela.ac.za

IT IS IN YOUR HANDS

the fight against COVID-19